



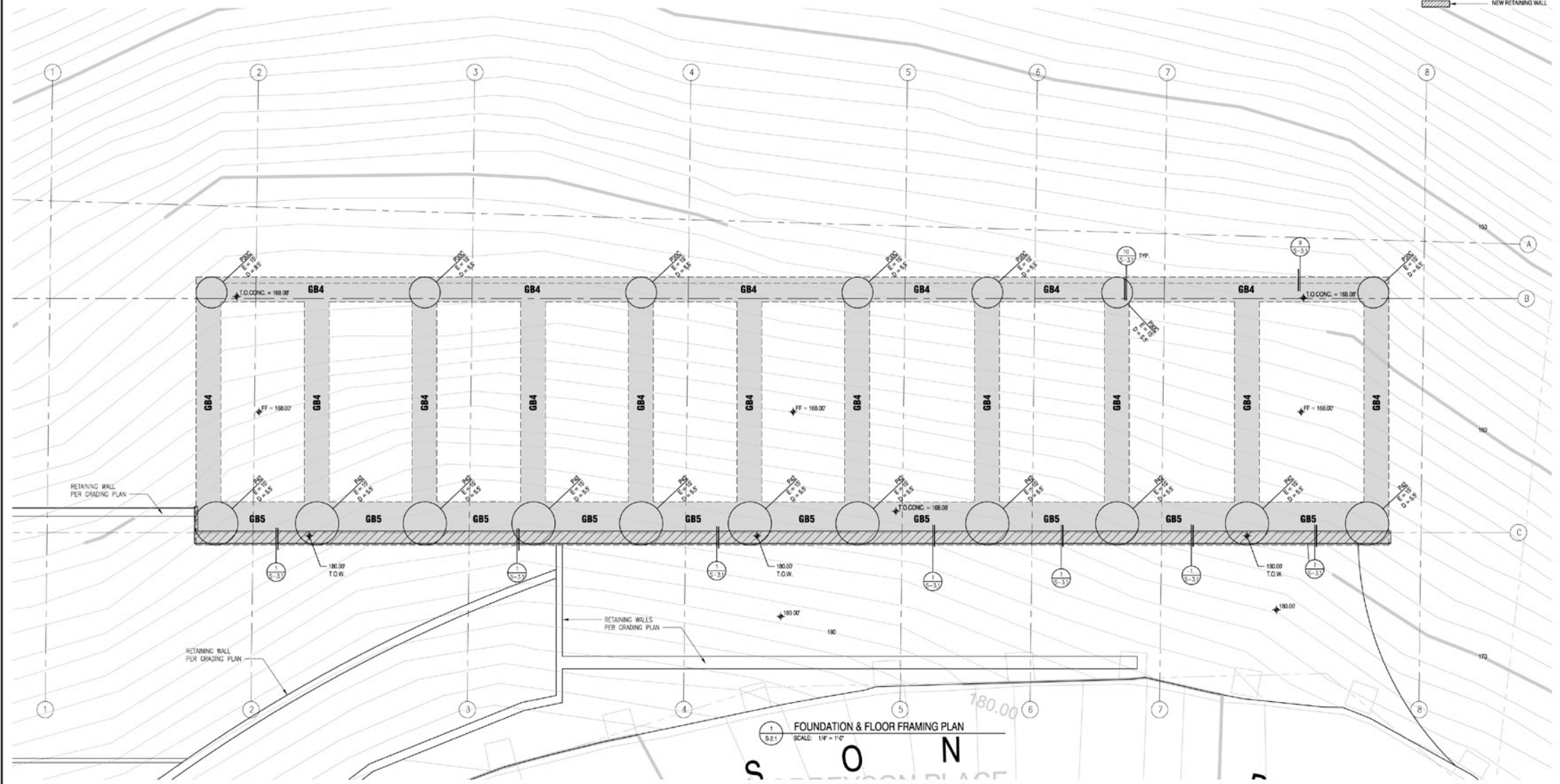
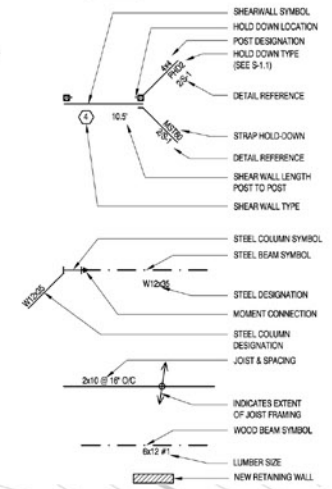
**EXPANSIVE SOIL REQUIREMENTS:**

- a) DEPTH OF FOOTINGS BELOW THE NATURAL AND FINISH GRADES SHALL NOT BE LESS THAN 24" FOR EXTERIOR AND 18" FOR INTERIOR FOOTINGS.
- b) EXTERIOR WALLS AND INTERIOR BEARING WALLS SHALL BE SUPPORTED ON CONTINUOUS FOOTINGS.
- c) FOOTINGS SHALL BE REINFORCED WITH MINIMUM FOUR 1/2" DIAMETER DEFORMED REINFORCING BARS. TWO BARS SHALL BE PLACED 4" WITHIN THE BOTTOM AND TWO BARS WITHIN 4" OF THE TOP OF THE FOOTINGS.
- d) THE SOIL BELOW AN INTERIOR CONCRETE SLAB SHALL BE SATURATED WITH MOISTURE TO A DEPTH OF 18" PRIOR TO PLACING THE CONCRETE.

**FOUNDATIONS NOTES:**

ALL FOUNDATION EXCAVATIONS MUST BE OBSERVED AND APPROVED BY THE PROJECT ENGINEERING GEOLOGIST AND ENGINEER PRIOR TO PLACEMENT OF REINFORCING STEEL. SOIL ENGINEER'S REPORT SHALL BE SUBMITTED TO THE BUILDING INSPECTOR AT TIME OF INSPECTION.

**LEGEND**



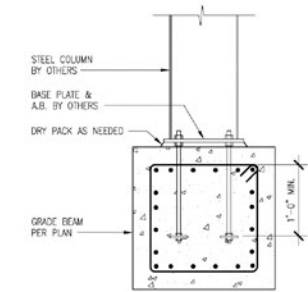
FOUNDATION & FLOOR FRAMING PLAN  
SCALE: 1/4" = 1'-0"

PRELIM.	04/11/05
SLOPE STABILIZ	5/7/07
PLAN CHECK	6/18/07
P/C CORR.	9/5/07
URB FOR.	12/13/07
REVISIONS	03/10/08
REVISIONS	04/08/08
GRADING REV.	5/6/08
GDG CORR	7/14/08

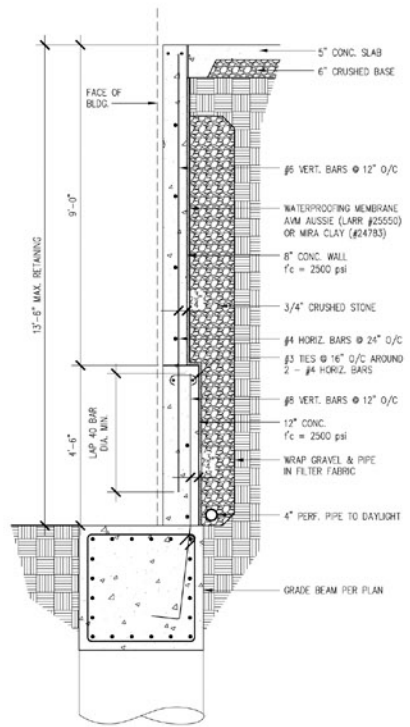
PRELIM.	04/11/05
SLOPE STABILIZ	5/7/07
PLAN CHECK	6/18/07
P/C CORR.	9/5/07
URB FOR.	12/13/07
REVISIONS	03/10/08
REVISIONS	04/08/08
GRADING REV.	5/6/08
GDD CORR	7/14/08

DETAILS

job no.  
 06-02  
 SCALE  
 AS NOTED  
 DRAWN BY  
 CMP, JB, JR  
 SHEET



10 TYPICAL BASE PLATE CONN. DETAIL  
 S3.1 SCALE: 1" = 1'-0"

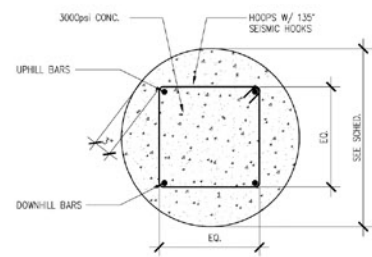


1 13'-6" MAX. HOUSE RETAINING WALL  
 S3.1 SCALE: 1/2" = 1'-0"

PILE SCHEDULE

MARK	DIA.	UPHILL BARS	DOWNHILL BARS	TIES
P30C	30"	6 - #11	4 - #6	#4 @ 10' O/C
P42	42"	8 - #10	8 - #10	#4 @ 12' O/C

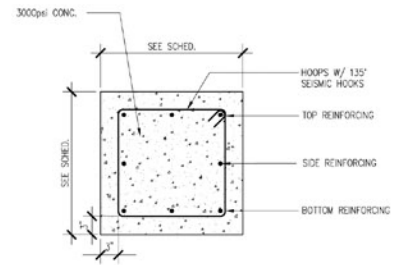
SEE PLAN FOR EMBEDMENT "E" INTO BEDROCK AND ASSUMED DEPTH TO BEDROCK "D" AS MEASURED FROM EXISTING GRADE. "D" IS THE ASSUMPTION USED FOR DESIGN. IT IS ESTIMATED BASED ON LIMITED SUBSURFACE EXPLORATION AS GIVEN BY A SOIL/GEOLOGY REPORT. IF THE "D" FOUND DURING EXCAVATION EXCEEDS THE "D" SHOWN ON PLAN BY 1'-0" OR MORE, CONTACT THE ENGINEER FOR EVALUATION AND POSSIBLE REVISED PILE DESIGN. SOIL CONSULTANT APPROVAL OF EXCAVATION IN THE FIELD IS REQUIRED BEFORE PLACING REINFORCING STEEL.



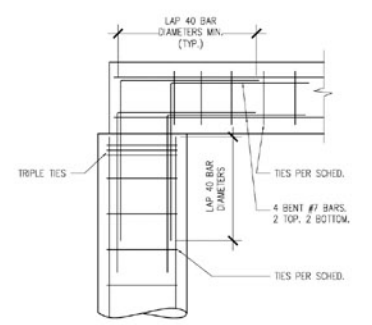
8 TYPICAL PILE  
 S3.1 SCALE: 1" = 1'-0"

GRADE BEAM SCHEDULE

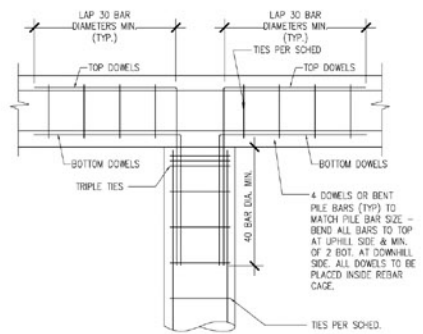
MARK	SIZE W x D	TOP REINF.	BOTT. REINF.	SIDE REINF. EA. SIDE	TIES
GB5	42" x 42"	6 - #8	6 - #8	4 - #8	#4 @ 7' O/C



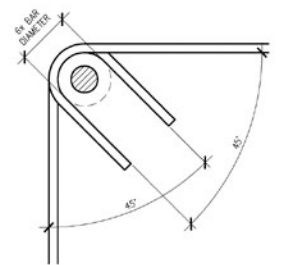
7 TYPICAL GRADE BEAM  
 S3.1 SCALE: 1" = 1'-0"



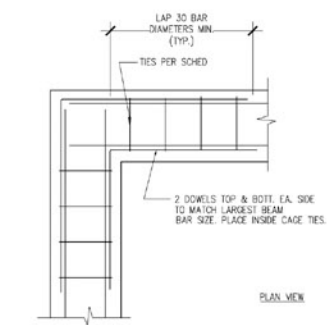
2 PILE TO GRADE BEAM "L" CONNECTION  
 S3.1 SCALE: 1/2" = 1'-0"



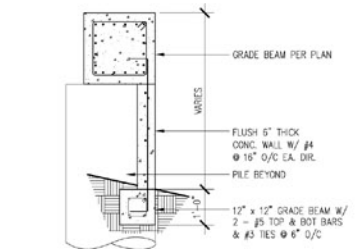
5 PILE TO GRADE BEAM "T" CONNECTION  
 S3.1 SCALE: 1/2" = 1'-0"



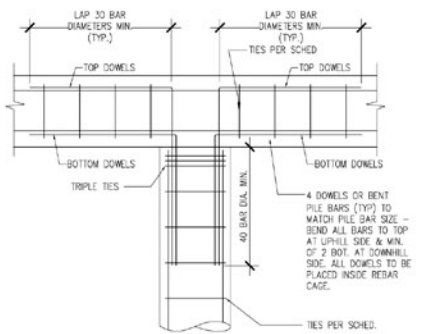
8 HOOK DETAIL AT TIE  
 S3.1 SCALE: 3" = 1'-0"



4 GRADE BEAM "L" CONNECTION  
 S3.1 SCALE: 1/2" = 1'-0"



9 AESTHETIC CONCRETE WALL  
 S3.1 SCALE: 1/2" = 1'-0"



5 PILE TO GRADE BEAM "T" CONNECTION  
 S3.1 SCALE: 1/2" = 1'-0"