

GUIDE TO READING AN ASSESSOR'S PLAT MAP

A Parcel Number
Always in a small circle.
(occasionally an oval).

Attached housing will have 2 additional numbers (unit #) at the end of the parcel number.

C Lot Number
Never Circled; shows the subdivision lot number of the property.

E Page Number
Of the Assessor's Book, Page & Picture Corner 1#. This is the full, 3 digit number (coinciding with column one in the changes box); always in an oval.

G Distances & Bearings
Data on borders of the map. This data is from recorded deeds or surveys.

I North Arrow
Will not always be pointing "up".
SCALE: Is useful if map has been printed to proper size.

K Changes Box
Provides the history of the map page.

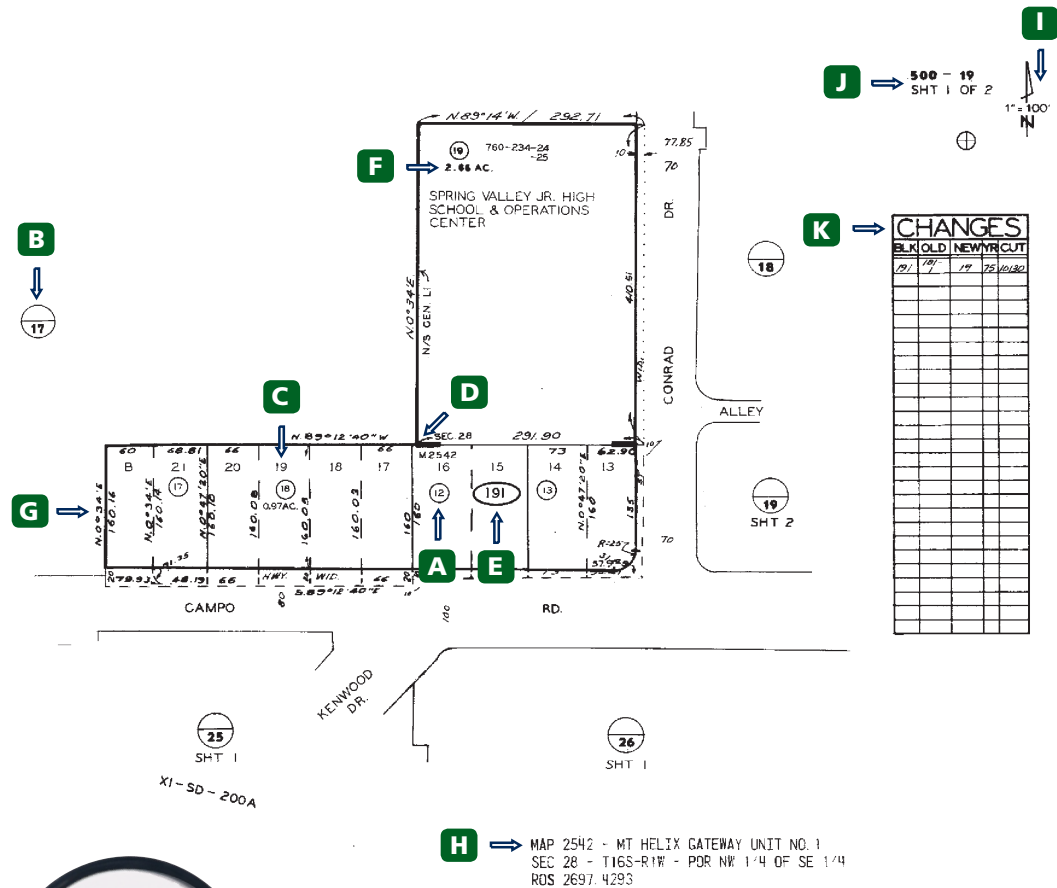
B Book & Page Circle
Indicates what map page (# below the line) adjoins our map and in some cases which Assessor's Book (# above the line).

D "Picture Corner"
Shows the exterior corners of subdivision map boundaries as shown on the plat.

F Acreage Figures
A decimal number with AC following. Not always accurate. Use only for estimate.

H Lower Right
Brief legal description of properties included on this page.

J Assessor's Book Number
Followed by first two digits of the Page Number, located in the upper right corner next to arrow.



CUT
Refers to the Assessor's file for document number, re: the change

BLK
Full, three-digit page number area of map.

YR
Assessed tax year the change took place.

OLD
The old (now changed) parcel number.

NEW
The new (changed) parcel number.